

10 Years of FPF: Highlights and Impacts

Prof. Dr. Martin Scheringer

Food Packaging Forum Foundation, Zürich

www.foodpackagingforum.org

scheringer@usys.ethz.ch



10 Years of FPF



June
2022

10 Years of Work

[Home](#)[News](#)[Resources](#)[Food Packaging & Health](#)[Events](#)[About](#)

FACT BITES

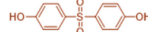
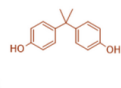
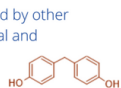
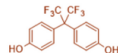
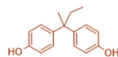
Check out our latest fact bites! These are little info nibbles about food published to our social media channels. Learn more about each topic

[Fact Sheets](#)[Databases](#)[Research Projects](#)[Dossiers](#)[Peer-Reviewed Papers](#)[Book Chapters](#)[Fact Bites](#)[Talks & Presentations](#)[Unwrapping Food](#)[Packaging Blog](#)[Coronavirus & Packaging](#)

and food contact chemicals
the linked resource.

Regrettable substitution: when a hazardous chemical is replaced with a substance that currently lacks safety data and is later found to be just as (or more) hazardous

Example: BPA has been replaced by other **bisphenols** with similar structural and toxicological properties



The European Chemicals Agency recommended in April 2022 to classify at least 34 of 148 assessed **bisphenols** as substances of very high concern

Learn more:

FoodPackagingForum.org/regrettable-substitution



Regrettable substitution - September 20, 2022

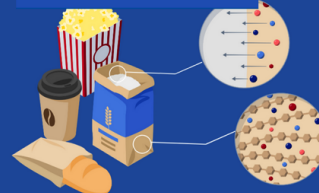
We know the long term health effects of all the chemicals in our food

Pa
ma

Packaging Blog

Coronavirus & Packaging

paper-based food packaging
number of migrating chemicals



Paper has low barrier properties so chemicals from inks, adhesives, and anything in the material can move through it.

Learn about the chemicals measured in packaging materials:

FoodPackagingForum.org/FCCmigex



Chemical migration from paper & board - August 23, 2022

10 Years of Work



Home News Resources Food Packaging & Health Events About

FACT BITES

Check out our latest fact bites! These are little info nibbles about food published to our social media channels. Learn more about each topic



Fact Sheets

Databases

Research Projects

Dossiers

Peer-Reviewed Papers

Book Chapters

Fact Bites

Talks & Presentations

Unwrapping Food

Packaging Blog

Coronavirus & Packaging

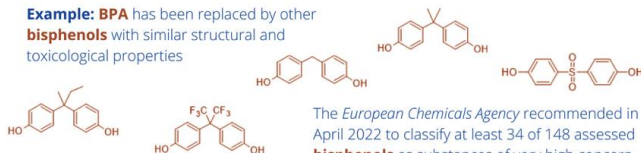
FCCmigex Database

Food Contact Chemicals Database

Brand & Retailer Database

Regrettable substitution: when a hazardous chemical is replaced with a substance that currently lacks safety data and is later found to be just as (or more) hazardous

Example: BPA has been replaced by other **bisphenols** with similar structural and toxicological properties



The European Chemicals Agency recommended in April 2022 to classify at least 34 of 148 assessed **bisphenols** as substances of very high concern

Learn more:
FoodPackagingForum.org/regrettable-substitution



Regrettable substitution - September 20, 2022

We know the long term health effects of all the chemicals in our food

paper-based food packaging
number of migrating chemicals



Paper has low barrier properties so chemicals from inks, adhesives, and anything in the material can move through it

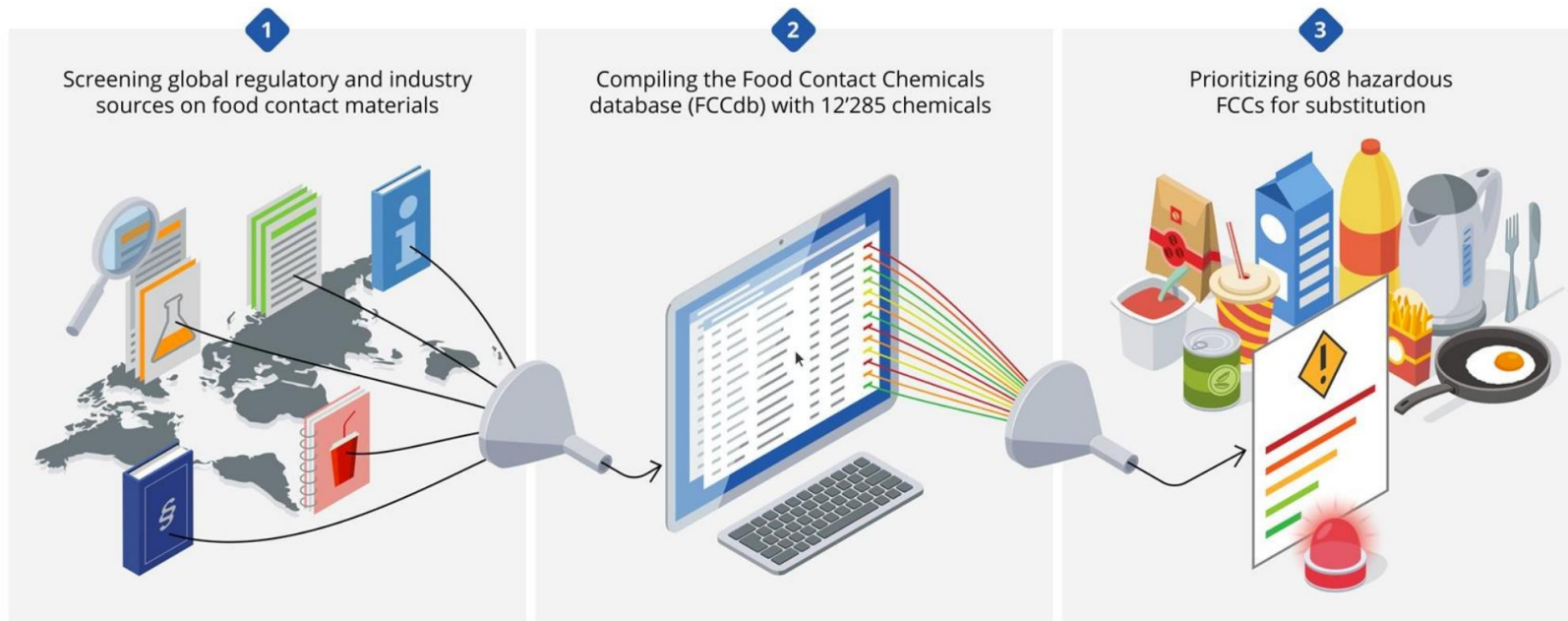
Learn about the chemicals measured in packaging materials:
FoodPackagingForum.org/FCCmigex



Chemical migration from paper & board - August 23, 2022

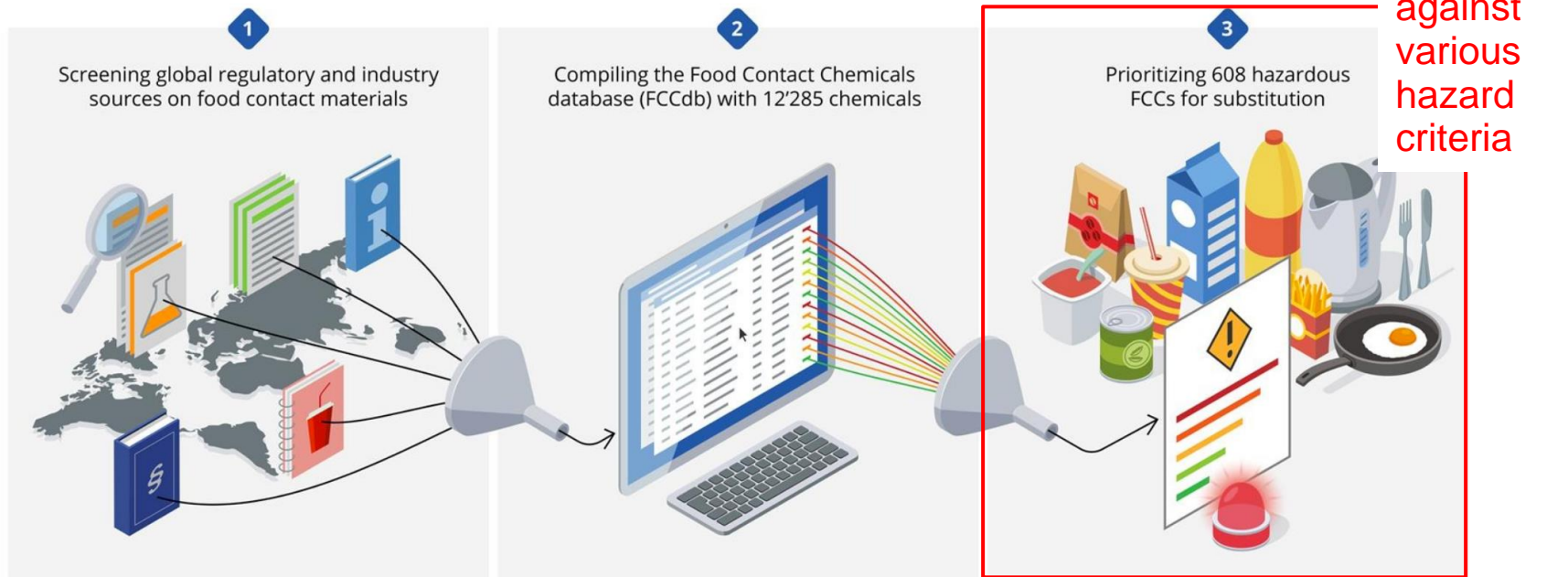
The Food Contact Chemicals Database: FCCdb

- compilation and analysis of 12'285 chemicals for intentional use in food-contact materials



The Food Contact Chemicals Database: FCCdb

- compilation and analysis of 12'285 chemicals for intentional use in food-contact materials



The Food Contact Chemicals Database: FCCdb

- described in a peer-reviewed publication (Groh et al. 2021)
- available for download

Environment International 150 (2021) 106225



Contents lists available at ScienceDirect

Environment International

journal homepage: www.elsevier.com/locate/envint



Review article

Overview of intentionally used food contact chemicals and their hazards



Ksenia J. Groh ^{a,*}, Birgit Geueke ^a, Olwenn Martin ^b, Maricel Maffini ^c, Jane Muncke ^a

^a Food Packaging Forum, Staffelstrasse 10, 8045 Zurich, Switzerland

^b Institute for the Environment, Health and Societies, Brunel University London, Quad North 17a, Kingston Lane, Uxbridge UB8 3PH, United Kingdom

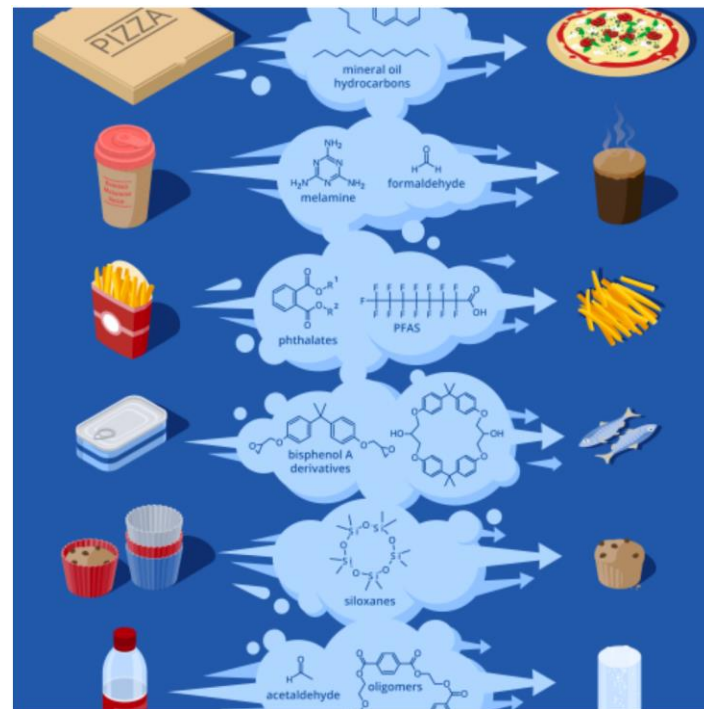
^c Independent Consultant, Frederick, MD, USA

<https://doi.org/10.1016/j.envint.2020.106225>

<https://www.foodpackagingforum.org/fccdb>

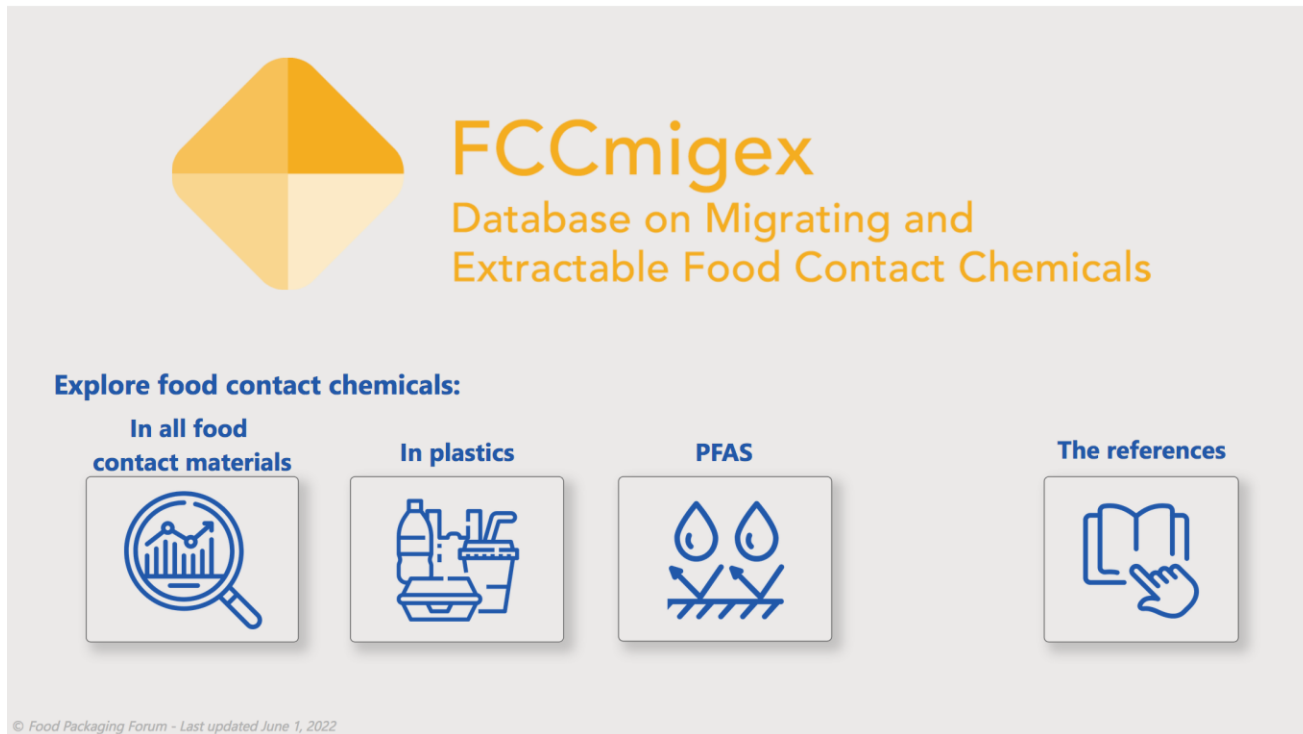
The FCCmigex Database

- 2881 chemicals **detected** in food, food simulants, or extract of food-contact materials
- information extracted from 1210 individual scientific studies (out of 19'483 initial hits from database searches)



The FCCmigex Database

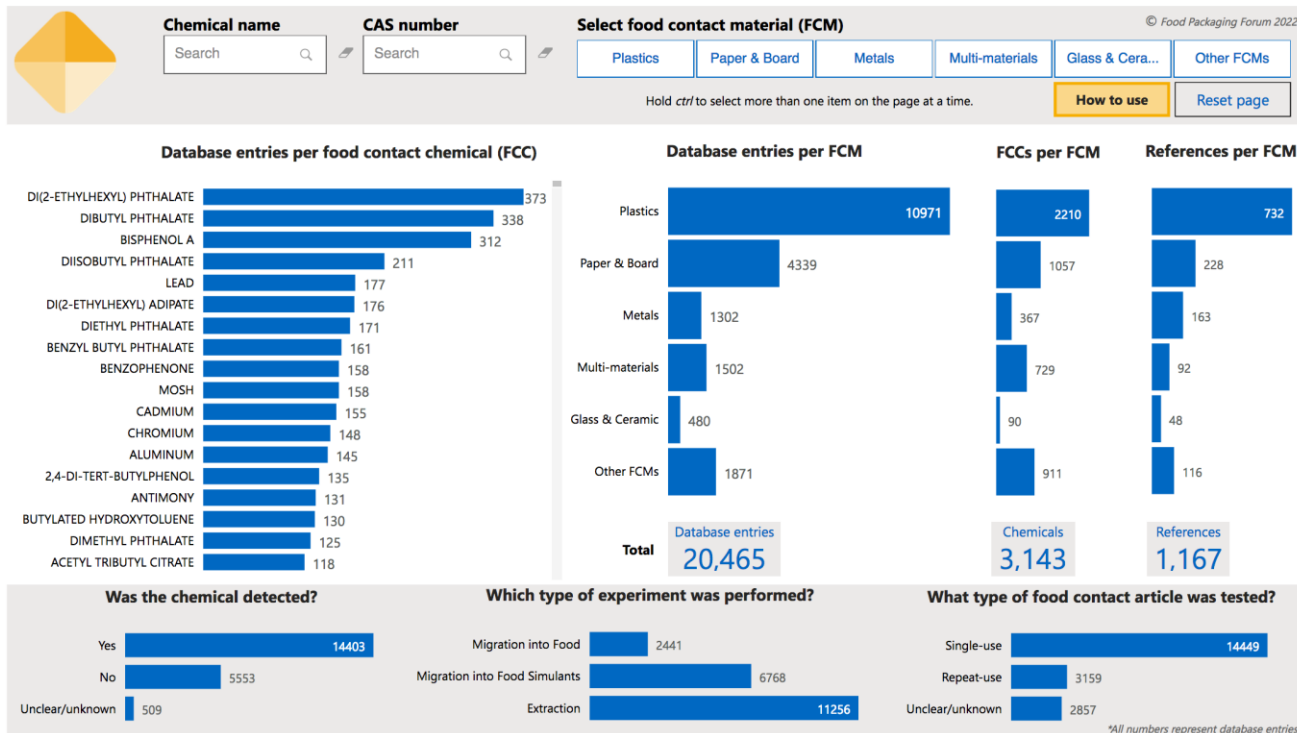
- FCCmigex can be searched via an online tool:



<https://www.foodpackagingforum.org/fccmigex>

The FCCmigex Database

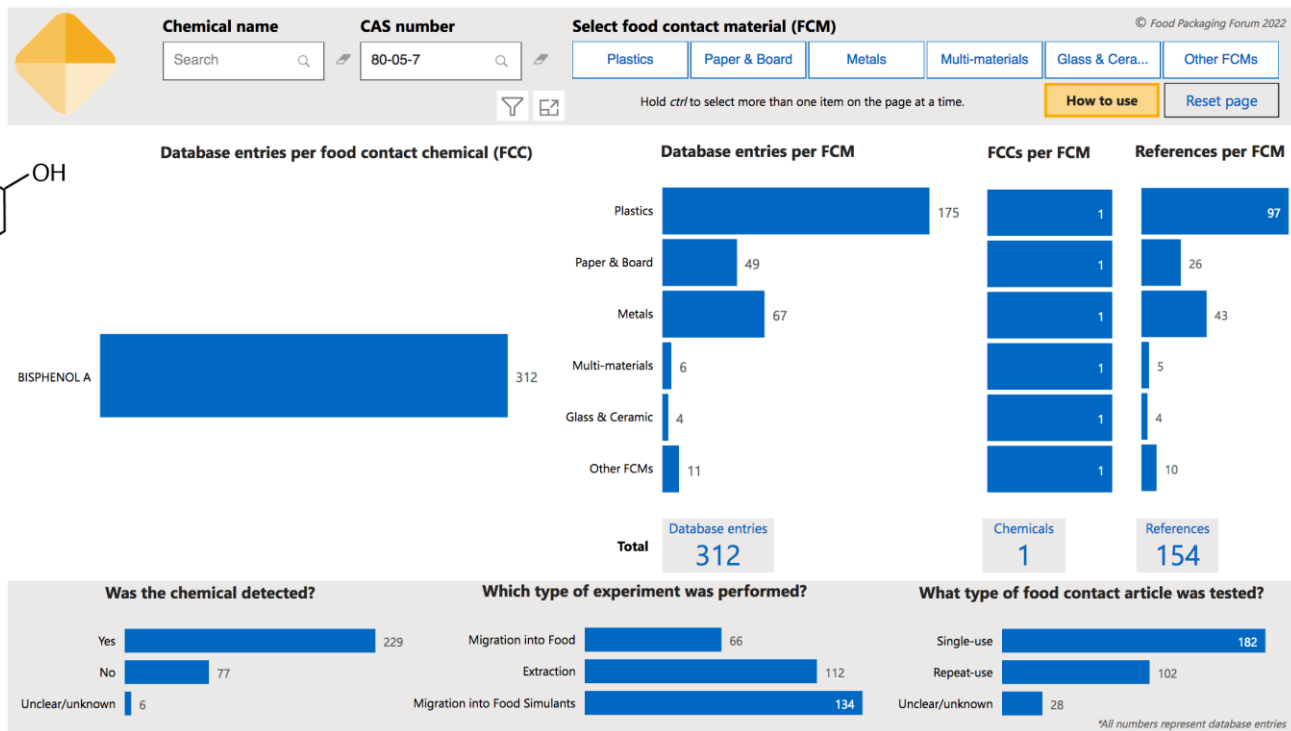
FCCmigex can be searched via an online tool:



<https://www.foodpackagingforum.org/fccmigex>

The FCCmigex Database

■ FCCmigex can be searched via an online tool:



<https://www.foodpackagingforum.org/fccmigex>

The FCCmigex Database

■ described in a peer-reviewed publication (Geueke et al. 2022)

CRITICAL REVIEWS IN FOOD SCIENCE AND NUTRITION
<https://doi.org/10.1080/10408398.2022.2067828>



REVIEW

OPEN ACCESS



Systematic evidence on migrating and extractable food contact chemicals: Most chemicals detected in food contact materials are not listed for use

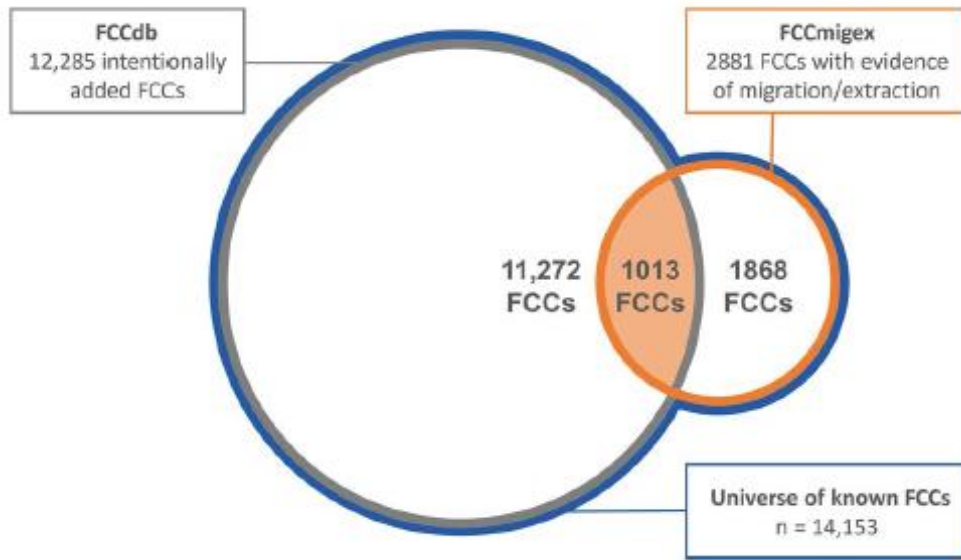
Birgit Geueke^a , Ksenia J. Groh^b , Maricel V. Maffini^c , Olwenn V. Martin^d , Justin M. Boucher^a , Yu-Ting Chiang^e , Frank Gwosdz^f, Phoenix Jieh^a, Christopher D. Kassotis^e , Paulina Łańska^g, John Peterson Myers^h , Alex Odermattⁱ , Lindsey V. Parkinson^a , Verena N. Schreier^j , Vanessa Srebny^j , Lisa Zimmermann^a , Martin Scheringer^k and Jane Muncke^a

^aFood Packaging Forum Foundation, Zurich, Switzerland; ^bDepartment Environmental Toxicology, Eawag, Swiss Federal Institute of Aquatic Science and Technology, Duebendorf, Switzerland; ^cIndependent Consultant, Frederick, MD, USA; ^dDepartment of Arts & Science, University College London, UK; ^eInstitute of Environmental Health Sciences and Department of Pharmacology, Wayne State University, Detroit, MI, USA; ^fEntre-preners, Landsberg, Germany; ^gCentre for Pollution Research and Policy, Brunel University, Uxbridge, UK; ^hEnvironmental Health Sciences and Department of Chemistry, Carnegie Mellon University, Pittsburgh, PA, USA; ⁱDivision of Molecular and Systems Toxicology, Department of Pharmaceutical Sciences, University of Basel, Basel, Switzerland; ^jBiointerfaces Lab, EMPA, Swiss Federal Laboratories for Materials Science and Technology, St. Gallen, Switzerland; ^kInstitute of Biogeochemistry and Pollutant Dynamics, ETH Zurich, Zurich, Switzerland

<https://doi.org/10.1080/10408398.2022.2067828>

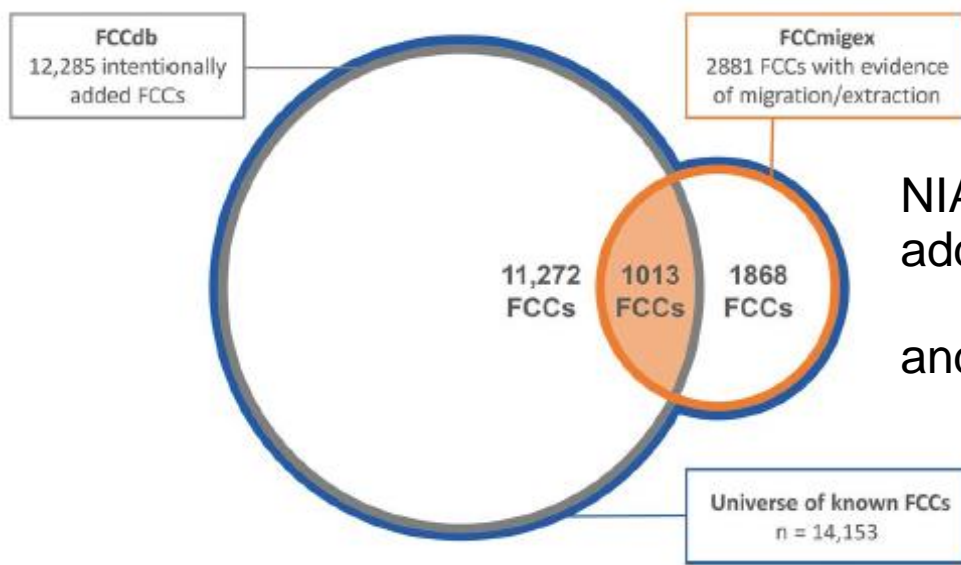
FCCdb and FCCmigex: Overlap?

- 1868 chemicals that migrate out of FCM not listed for intentional use



FCCdb and FCCmigex: Overlap?

- 1868 chemicals that migrate out of FCM not listed for intentional use

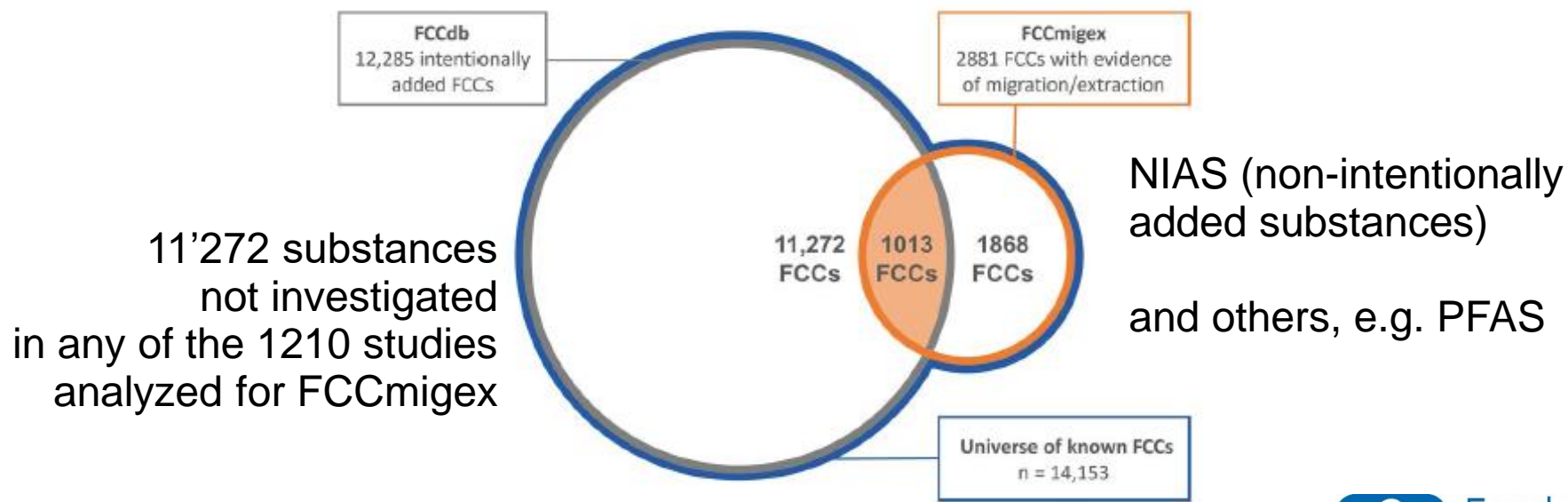


NIAS (non-intentionally added substances)

and others, e.g. PFAS

FCCdb and FCCmigex: Overlap?

- 1868 chemicals that migrate out of FCM
not listed for intentional use



A New View of the Landscape of FCCs

- two databases, available free of charge
- an FCC universe of 14'153 substances
- several 100 of hazardous FCCs still in use
- 2881 FCCs migrating out of their respective FCMs
- assign FCCs to FCMs
- ...

Thank you for your attention!