

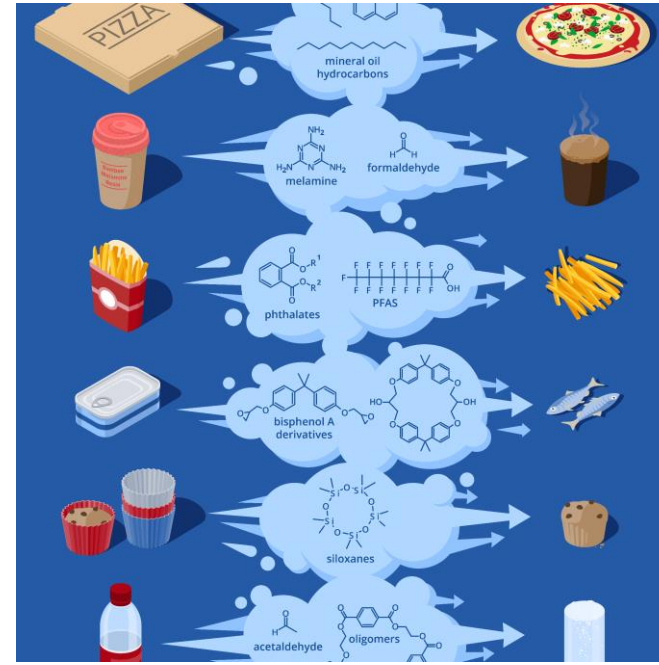
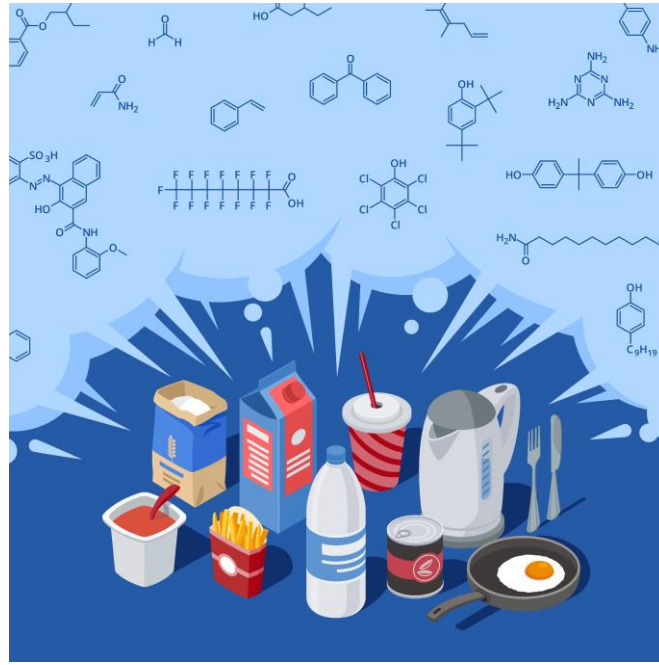


FCCH project:

How do
Food Contact Chemicals
affect human Health?

Which chemicals are used in the manufacture of food packaging?

>12,000 FCCs
>50 sources

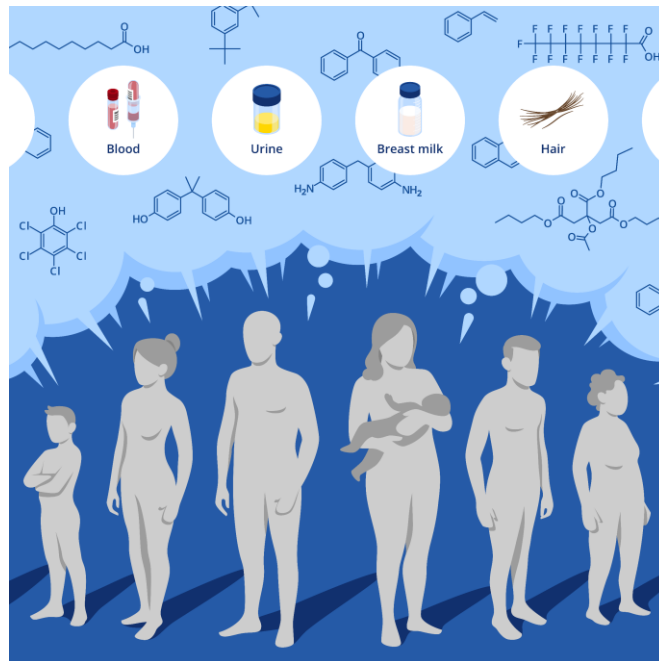


Which FCCs have been detected in migrates and extracts?

>4000 FCCs
>1300 references

Which FCCs have been monitored in humans?

100s of FCCs with high level of confidence
sources: 5 biomonitoring programs, 3 databases, primary literature



How do these chemicals affect human health?

Packaging manufacturer:
“What is the regulatory status of this **photoinitiator**?”

RA specialist:
“Does this **monomer** have hazard properties of concern?”

Epidemiologists:
“Are there chemicals migrating from food packaging that are **missing in biomonitoring programs**?”

Public health expert:
“How many **phthalates** have been detected **in** food contact materials AND **humans**?”

Regulators:
“How many **BPA alternatives** have been detected in migrates of different FCMs?”

Enforcement authority:
“What is known about the presence of carcinogenic PAAs in **reusable plastic** kitchen utensils?”

Polymer specialists:
“Is there evidence for migration of oligomers from this type of polymer?”

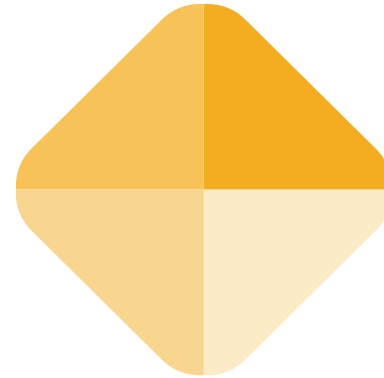
NGO staff:
“How many **PFASs** have been found in food contact materials?”

Endocrinologist:
“Does this food contact chemical have **endocrine disrupting properties**?”



FCCdb

Food Contact
Chemicals Database



FCCmigex

Migrating and Extractable
Food Contact Chemicals

